

PowerSpring Meter Data Management Software

Powerful Tool for AMI/Smart Metering and Pressure Monitoring

Brief Information

Honeywell's PowerSpring Meter Data Management (MDM) System eases IT integration of AMI/Smart Metering and facilitates the distribution of meter data across the utility enterprise by framing the volumes of data retrieved from field meters into manageable and familiar information.

PowerSpring MDM offers a data collection software suite that brings the power and flexibility of Microsoft's SQL Server for data management and remote monitoring. It provides database repository and gas distribution business logic to automate the complex process of collecting meter data from multiple meter data collection technologies. The software is now offered with a host of significant enhancements:

- Flexible, role-based access control (e.g., authentication and authorization of users with predefined operator, technician, administrator and manager roles with specific privileges; editable default privileges and creation of new roles with custom privileges)
- Integrated security for databases
- ACLs for the PowerSpring File System with a dedicated domain user account
- Configurable HTTPS (HTTP over SSL) communication between browser and PowerSpring Client
- Industry standard password practices (e.g., built-in password expiry mechanism and encrypted storage of login credentials)
- Protection against unauthorized access (e.g., account lockout after five consecutive failed login attempts)
- Audit logs to prevent repudiation
- Inactivity session timeout



FEATURES & BENEFITS

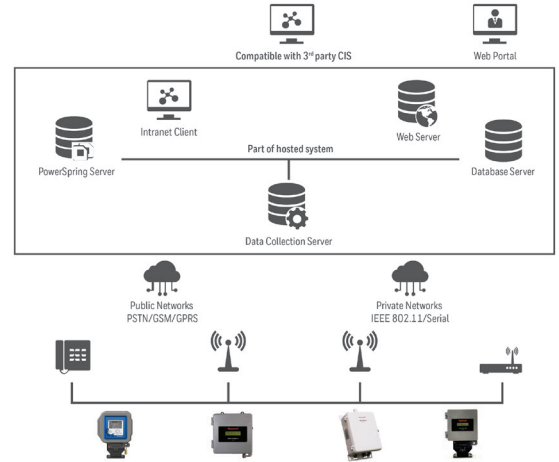
- Powerful data collection engine
- Automates regulatory requirements
- Meets complex billing and operations needs
- Supports all Mercury Instruments products
- Supports ANSI C12.19 communications
- Two-way Read/Write capabilities to all products
- PSTN and cellular IP connectivity
- Flexible data export options including ODBC connectivity
- Robust reporting through SQL Server Reporting Services (SSRS)
- Simple enterprise integration for existing applications
- Automatic distribution of reports through email and FTP
- Secured access through browser-based clients

Technical Specifications

PowerSpring aggregates large volumes of granular interval meter data, and then pre-processes it smartly and efficiently before such data is commercially processed by other enterprise utility applications. The sheer volume of meter data from gas meters requires consistent, corporate-wide “best practice” rules for managing the increased potential for data error.

The software can be used to value the quality of data and publish it in the appropriate format to utility enterprise systems for billing, metering, operations, engineering, customer service, etc.

With the deployment of smart meters or AMIs, PowerSpring also handles the storage and distribution of non-billing data and messaging such as two-way commands, Hi/Lo pressure alarms, outage alarms, zero flow conditions, tamper alarms, etc.

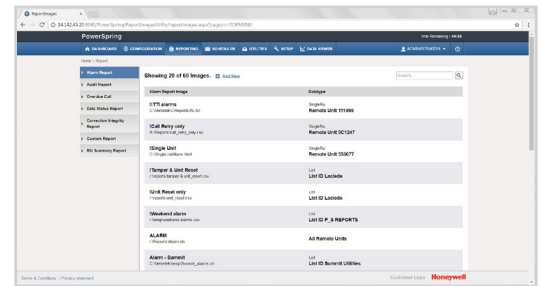


Powerful Data Collection Engine

- Processes approximately 5,000 landline calls per hour and 200 simultaneous IP-based connections.

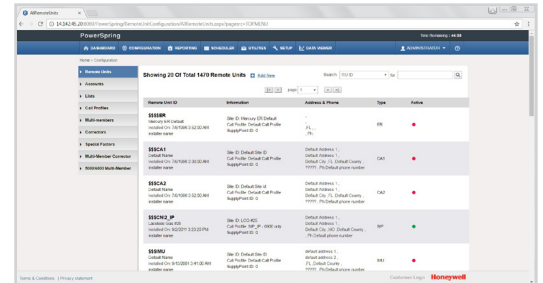
Three Ways to Access Data

- Via integrated custom report application
- Via standard SQL queries
- Via third-party package (Crystal Reports)



Computer Specifications

- Microsoft Windows operating systems
 - 2008 Standard Edition 32 bit
 - 2008 Standard Edition 64 bit / 2008 R2 Standard Edition 64 bit
 - 2012 Standard Edition 64 bit / 2012 R2 Standard Edition 64 bit
 - 2016 Standard Edition 64 bit
- Microsoft SQL Server (32bit - 2005, 2008, 2008 R2 DC2009 minimum server requirements)
- IIS 10
- Dual-core PC with 4GB RAM
- 80 GB+ hard disk space
- Monitor/keyboard/mouse
- Networkcard



For More Information

To learn more about Honeywell's Smart Gas Metering Solutions, visit www.honeywellprocess.com or contact your Honeywell account manager.

Honeywell Process Solutions

1280 Kemper Meadow Drive Cincinnati, OH 45240
 Phone: +1 (855) 251-7065
www.honeywellprocess.com