

RMA805 ENRAF FLEXLINE REMOTE INDICATOR

Technical Information

The RMA805 Enraf FlexLine Remote Indicator provides a means of remote-mounting a display that is associated with a Honeywell Enraf FlexLine Gauge.

The Remote Indicator can be located hundreds of meters away from the FlexLine Gauge providing easy access to data.

The Remote Indicator must be connected to the local HART compatible bus of the Enraf SmartRadar FlexLine 990 or the Enraf Smart Servo FlexLine 954.

The Remote Indicator can be used in hazardous or non-hazardous environments. When either the FlexLine Gauge or the Remote Indicator is used in a hazardous environment, the Remote Indicator must be configured as per local installation codes.

The display module fitting allows for rotation in 90-degree increments, allowing the Remote Indicator to be mounted in various orientations.

BEST IN CLASS FEATURES AND OPTIONS

- 0, 90, 180, & 270 degree viewing position adjustments
- Modular design characteristics
- Dual compartment housing
- Product level, temperature, operational status and alarm status on same screen
- Adjustable contrast and refresh indicator
- Configurable standby time



Figure 1: RMA805 Enraf FlexLine Remote Indicator

SPECIFICATIONS

| PARAMETER | | |
|------------------------|---------------|---------------|
| Environmental | | |
| Ambient Temperature | Deg. C | Deg. F |
| Rated | -40 to 85 °C | -40 to +185°F |
| Operative (display) | -20 to 70 °C | -4 to +158°F |
| Transportation/Storage | -50 to +100°C | -58 to +212°F |

| Humidity (% RH) | |
|------------------------|-------------|
| Reference | 10 – 55% RH |
| Rated | 5 – 100% RH |
| Operative | 5 – 100% RH |
| Transportation/Storage | 5 – 100% RH |

| Design Specifications | |
|-----------------------------|--|
| Electrical Compatibility | To be used with Honeywell Enraf FlexLine Gauges only. See note 1. |
| Functional Compatibility | To be used with Honeywell Enraf FlexLine Gauges only. See note 1. |
| Reverse Polarity Protection | Yes |
| Cable Length | 1000 Meter. See note 2. |
| Display | |
| Display Resolution | Advanced graphical display |
| Display Update Rate | 1 second |
| Display Performance | The LCD display may turn blank below -20 °C and above 70 °C (-4°F and 158°F). The display will again be readable when temperatures return to within operable limits. |

Notes:

1. The Remote Indicator must be connected to the local HART compatible bus of the Enraf SmartRadar FlexLine or the Enraf SmartServo FlexLine 954.
2. Refer to HART Communication Foundation document number HCF_SPEC-54 (FSK Physical Layer Specification) for detailed length calculations.

MOUNTING AND DIMENSIONAL DRAWINGS

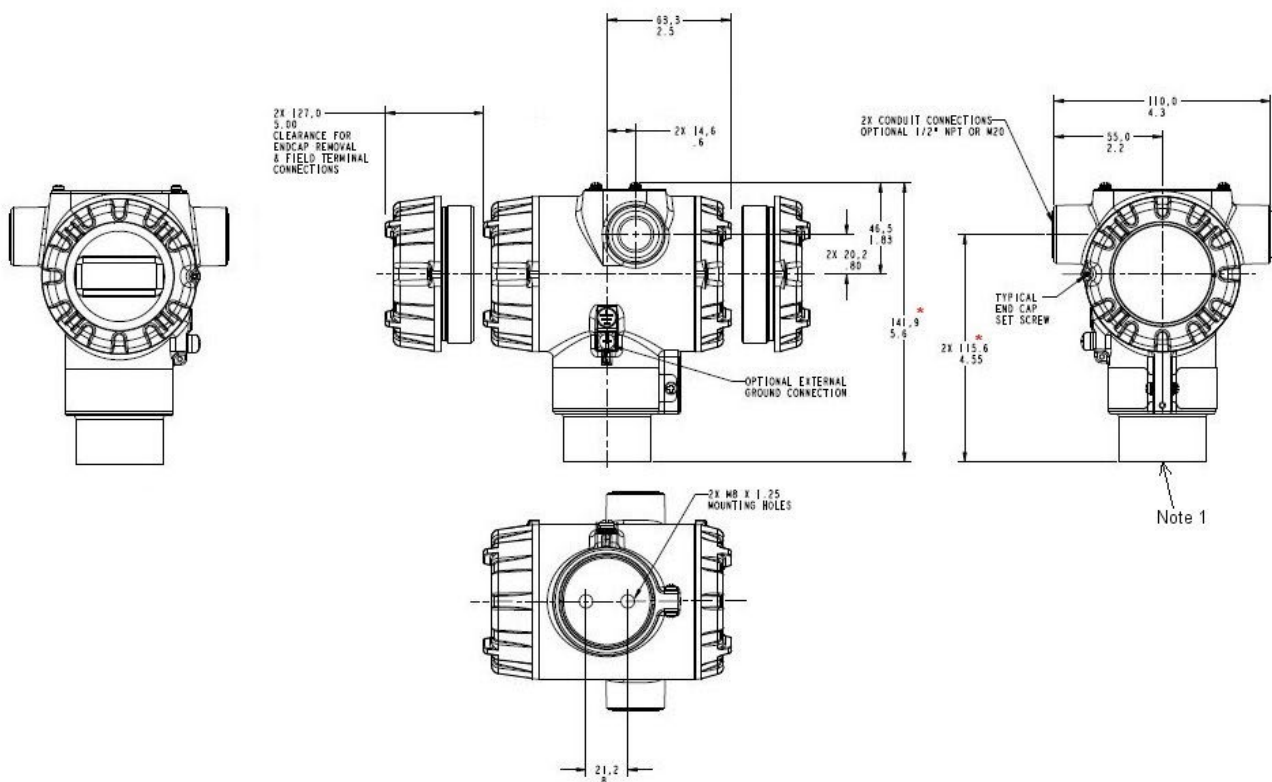





Figure 2: RMA805 Dimensions

APPROVAL CERTIFICATIONS

| HAZARDOUS LOCATIONS CERTIFICATIONS | | | | |
|------------------------------------|--------|---|-----------------------|---|
| MSG CODE | AGENCY | TYPE OF PROTECTION | ELECTRICAL PARAMETERS | AMBIENT TEMPERATURE |
| C | ATEX | Flame-proof and Dust:  II 2 G Ex db IIC T6..T5 Gb II 2 D Ex tb IIIC T 95oC Db | Note 1 | T6: -20°C to 65°C T95°C, T5: -20°C to 85°C |
| | | Intrinsically Safe:  II 1 G Ex ia IIC T4 Ga | Note 2 | -20°C to 70°C |
| | | Non-Incendive  II 3 G Ex ec IIC T4 Gc | Note 1 | -20°C to 85°C |
| | | Enclosure: Type IP66/ IP67 | ALL | ALL |
| | | STANDARDS: EN 60079-0: 2018; EN 60079-1: 2014; EN 60079-11: 2012; EN 60079-31: 2014; EN 60079-7: 2015; | | |
| D | IECEX | Flame-proof: Ex db IIC T6..T5 Gb Ex tb IIIC T 95oC Db | Note 1 | T6: -20°C to 65°C T95°C, T5: -20°C to 85°C |
| | | Intrinsically Safe: Ex ia IIC T4 Ga | Note 2 | -20°C to 70°C |
| | | Non-Incendive Ex ec IIC T4 Gc | Note 1 | -20°C to 85°C |
| | | Enclosure: IP66/ IP67 | ALL | ALL |
| | | STANDARDS: IEC 60079-0: 2017; IEC 60079-1: 2014; IEC 60079-11: 2011; IEC 60079-7: 2015; IEC 60079-31: 2014 | | |
| G | NEPSI | Flame-proof: Ex d IIC Ga/Gb T4 Ex tb IIIC Db T 85oC | Note 1 | -50 °C to 85°C |
| | | Intrinsically Safe: Ex ia IIC Ga T4 | Note 2 | -50 °C to 70°C |
| | | Nonincendive: Ex nA IIC Gc T4 | Note 1 | -50 °C to 85°C |
| | | Enclosure: IP 66/67 | All | All |

MODEL SELECTION GUIDE

| KEY NUMBER | BASE MODEL | SELECTION | |
|---|--|--------------------------------|-----------------------------|
| | Enraf FlexLine | RMA805 | ↓ |
| TABLE I | AGENCY APPROVALS (SEE DATA SHEET FOR APPROVAL CODE DETAILS) | | |
| Approvals | ATEX Explosion proof, Intrinsically Safe & Non-incendive | | |
| | IECEX Explosion proof, Intrinsically Safe & Non-incendive | | |
| | NEPSI Explosion proof, Intrinsically Safe & Non-incendive | | |
| TABLE II | TRANSMITTER ELECTRONICS SELECTIONS | | |
| a. Electronic Housing Material & Connection Type | Material | Connection | Lightning Protection |
| | Polyester Powder Coated Aluminum | 1/2 NPT | None |
| | Polyester Powder Coated Aluminum | M20 | None |
| | Polyester Powder Coated Aluminum | 1/2 NPT | Yes |
| | Polyester Powder Coated Aluminum | M20 | Yes |
| | 316 Stainless Steel (Grade CF8M) | 1/2 NPT | None |
| | 316 Stainless Steel (Grade CF8M) | M20 | None |
| | 316 Stainless Steel (Grade CF8M) | 1/2 NPT | Yes |
| 316 Stainless Steel (Grade CF8M) | M20 | Yes | |
| b. Protocol Compatibility | Communications Protocol | | |
| | Enraf FlexLine Enabled | | |
| c. Customer Interface Selections | Display | External Config Buttons | Languages |
| | Advanced | External | English |
| TABLE III | CONFIGURATION SELECTIONS | | |
| a. Application Software | Application Software | | |
| | Standard Software | | |
| b. Configuration | Factory Configuration | Write Protection | |
| | Factory Standard | Disabled | |

| TABLE IV | | ACCESSORY SELECTIONS | | RMA805 | |
|---|---|---|------------------------|--------|--|
| a. Mounting Bracket | Bracket Type | Material | | | |
| | None | None | 0 ___ | * | |
| | Flat Pipe Mounting Bracket | Carbon Steel | 1 ___ | * | |
| | Flat Pipe Mounting Bracket | 316 Stainless Steel | 2 ___ | * | |
| | Wall Mounting Bracket | Carbon Steel | 3 ___ | * | |
| | Wall Mounting Bracket | 316 Stainless Steel | 4 ___ | * | |
| | Marine Approved Mounting Bracket | 316 Stainless Steel | 5 ___ | * | |
| | Angle Pipe Mounting Bracket | Carbon Steel | 6 ___ | * | |
| | Angle Pipe Mounting Bracket | 316 Stainless Steel | 7 ___ | * | |
| b. Customer Tag | Customer Tag Type | | | | |
| | No customer tag | | _ 0 _ | * | |
| | One Wired Stainless Steel Tag (Up to 4 lines, 26 characters per line) | | _ 1 _ | * | |
| | Two Wired Stainless Steel Tag (Up to 4 lines, 26 characters per line) | | _ 2 _ | * | |
| c. Unassembled Conduit Plugs & Adapters | Unassembled Conduit Plugs & Adapters | | | | |
| | No Conduit Plugs or Adapters Required | | _ _ A0 | * | |
| | 1/2 NPT Male to 3/4 NPT Female 316 SS Certified Conduit Adapter | | _ _ A2 | n | |
| | 1/2 NPT 316 SS Certified Conduit Plug | | _ _ A6 | n | |
| | M20 316 SS Certified Conduit Plug | | _ _ A7 | m | |
| TABLE V | | OTHER Certifications & Options:(String in sequence comma delimited (XX, XX,..)) | | | |
| Additional Options | None - No additional options required | | 00 | * | |
| | Marine (LR only) | | MT | | |
| | Calibration Test Report & Certificate of Conformance | | F1 | | |
| | Certificate of Conformance | | F3 | * | |
| | Certificate of Origin | | F5 | * | |
| | Extended Warranty Additional 1 year | | 01 | b | |
| | Extended Warranty Additional 2 years | | 02 | | |
| | Extended Warranty Additional 3 years | | 03 | | |
| | Extended Warranty Additional 4 years | | 04 | | |
| | Extended Warranty Additional 15 years | | 15 | | |
| | TABLE VI | | MANUFACTURING SPECIALS | | |
| Factory | Factory Identification | | 0000 | * | |

| MODEL RESTRICTIONS | | | | | |
|--------------------|--|----------------|--------------------|--------------|--|
| RESTRICTION LETTER | AVAILABLE ONLY WITH | | NOT AVAILABLE WITH | | |
| | Table | Selection(s) | Table | Selection(s) | |
| m | Ila | B, D, F, H _ _ | | | |
| n | Ila | A, C, E, G _ _ | | | |
| b | Select only one option from this group | | | | |

For more information

To learn more about Honeywell Enraf's solutions, contact your Honeywell Enraf account manager or visit www.honeywellenraf.com

Americas

Honeywell Enraf Americas, Inc.
2101 CityWest Blvd, Houston, TX 77042
Houston, TX 77042, USA
Phone: +1 (480) 293-2042
Email: enraf-us@honeywell.com

Asia Pacific

Honeywell Pte Ltd.
17 Changi Business Park Central 1
Singapore 486073
Phone: +65 6355 2828
Email: enraf-sg@honeywell.com

Europe, Middle East and Africa

Honeywell Enraf
Delftechpark 39
2628 XJ Delft
The Netherlands
Phone: +31 (0)15 2701 100
Email: enraf-nl@honeywell.com

SV-20-22-ENG | 09/20
© 2020 Honeywell International Inc.

**THE
FUTURE
IS
WHAT
WE
MAKE IT**

Honeywell