

## Honeywell Trace™

### Product Information Note

Honeywell Trace™ software increases operational effectiveness and productivity. Trace documents a holistic view of process control data flow, considering system dependencies and all associations. With each snapshot, Trace's smart change detection captures changes made in day to day operations providing users the complete information they need to operate and avoid issues and potential shut downs when making modifications.

#### Honeywell Trace™ system configuration connections and references for maximum insight

Trace documents your system configuration, helps manage and document changes by capturing system information, configuration settings, and performance conditions. It is an essential tool to reduce the time, effort, and errors in ongoing control system engineering, maintenance, and support.

Honeywell Trace™ automatically captures and stores system configuration data at desired intervals, and with most systems taking less than 4-6 hours, users may choose to do so on a daily or weekly basis. With smart change tracking, Honeywell Trace™ proactively detects and records changes between snapshots, and automatically identifies anomalies to give you the insights you need for smoother, more efficient operations.

Users can quickly retrieve, analyze and compare time-stamped snapshots to identify configuration issues, assess performance impacts or identify and assign hardware status.

Dashboards and visualization tools provide at-a-glance understanding of system set-up and a powerful but simple parameter search and query.



*Smart change proves that less is more. Rather than automatically displaying every raw change, leaving it to users to manually filter the data to get the information they want, Honeywell Trace™ aggregates, groups and prioritizes changes to draw attention to those that are abnormal.*

*Trace provides the ability to zoom in to each parent level as well as view changes on an individual element allowing users to identify important changes quicker and save time getting the data they need.*

#### Increase availability

- Accelerate trouble-shooting.
- Identify configuration defects and anomalies.
- View system health on-demand.
- Minimize human errors.

#### Improve performance

- Drive best practices across the enterprise.
- Comply with control system configuration change management requirements.
- Document experienced workers' knowledge.

#### Unique features

- Record configuration changes every day
- User-defined defects.
- Network and hardware topology views.
- Intuitive searches and queries without SQL.
- Performance reporting to see configuration changes' impacts.
- Live System

#### Quantifiable results

- Up to 40% reduction in manual troubleshooting
- Fast data collection ~ 4-6 hours makes daily data capture - always have accurate information available.
- Zero Impact to system during data collection
- 20-50% lower quality assurance project

#### Versatile applications

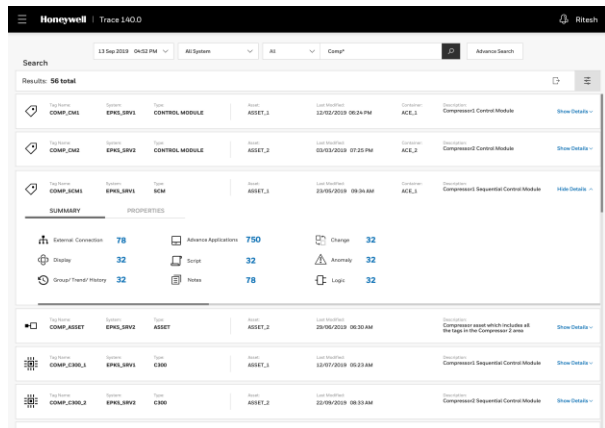
- Comprehensive documentation management.
- Capture control strategies.
- Support disaster recovery.
- Improve auditing and regulatory compliance.

Trend lines and logical network views make it where your assets sit by showing mappings of gateways, loops, and connection properties.

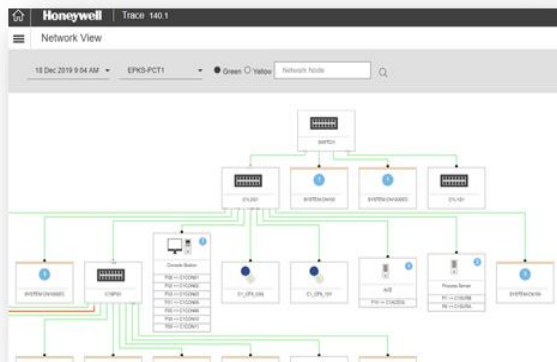


Smart dashboards provide at-a-glance understanding of system changes, configuration anomalies, with interactive trend lines

**Multiple Views of the System:** Logical, Network and Hardware Topology Views provide information at your fingertips. Feature identifies port connectivity etc.



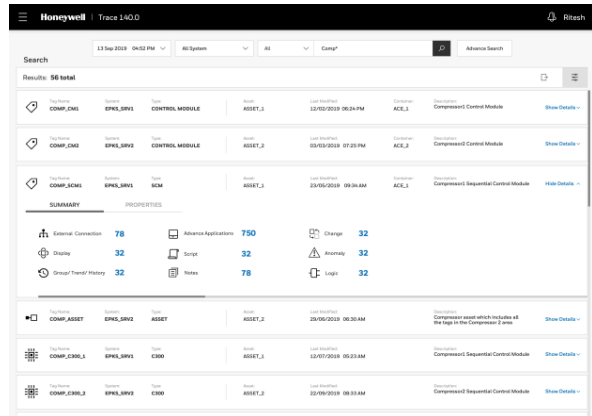
Views show the plant logically divided with both changes and defects color coded for quick identification



Hardware and network views present your system configuration in an intuitive topology and hierarchy design.

**Anomaly Detection:** Identifies conflicts to both Honeywell best practices and user defined configuration standards (like tag naming conventions). Trace will identify conflicts to those standards as 'Anomalies', providing the opportunity to make changes to comply.

**Universal Search:** Provides capability to search for any object in the system: tags, graphics, CL, control modules, hardware etc with powerful wild-card feature. The resulting findings allow users to immediately dive into detail to see exactly what they are interested in.



**Smart Change Detection** Trace will track changes made between snapshots and show a detail of engineering changes (additions, deletions, and modifications) with a powerful search, group and filter capability. Additionally, this capability supports the ability to acknowledge and document changes with comments where users can store a management of change number associated with a change if desired.

The screenshot shows the Honeywell Trace Change Detection table. It displays a detailed list of system changes. The table has columns for 'Change ID', 'Change Type', 'Status', 'Created On', 'Last Modified', 'Created By', and 'Comments'. The changes are listed in a grid format, allowing for easy review and management. The interface includes a search bar and a 'Change Detection' section.

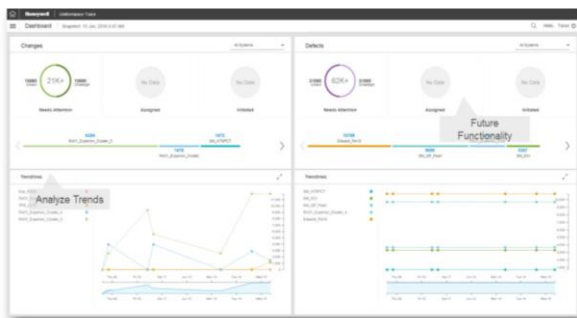
**Built in user defined queries and on demand and scheduled reports:** allows users search asset data based on criteria, expressions and output, without SQL scripting. Users can choose to select from lists of available variables or define their own search parameters.

**Real time system performance monitoring and alerting:** Live monitoring of controllers, computers and other network devices viewable on an intuitive dashboard display showing system status (in multiple ways) with drill down capability to view details. Combining the power of Trace's smart change detection with live user configurable alerting and notifications provide troubleshooting insights only available from Honeywell.

**On demand system performance reporting:** Honeywell Trace™ also provides system health reports, a technology proprietary to Honeywell. Run a performance report after hardware additions or any other configuration changes to rapidly identify all impacts on other system components. Honeywell Trace™ provides top-level metrics and in-depth coverage of control system performance, lifecycle planning, process control performance, alarm benchmarks and safety system auditing.

**Knowledge Capture:** Trace supports tools to document control strategies across controllers and systems to capture the complete view of the logic. Notes, drawings, and other documents can be linked to the strategies for complete documentation to capture critical user knowledge to increase productivity and retain key insights. The change detection described above will also track changes on a control strategy so that users can see the impact of changes to the overall strategy and not just the granular level. Customized notes can be made public to share across users, helping capture experienced insights and guide and inform future work and trouble-shooting.

**Advanced Batch Visualization** supports detailed view of procedure logic for Sequential Control, Unit Control, Recipe Control Modules, along with Master Recipes. This will show unit instances plus connections to expand and view logic, steps and transition expressions. This also supports instance based and class-based recipes.



## Supported Systems

Honeywell Trace™ supports a wide range of Honeywell customers' installed solutions:

- Experion® PKS System
- TPN/TPS System
- Fail Safe Controller
- Safety Manager & Safety Controller
- Triconex
- AllenBradley ControlLogix® PLCs
- Historians – Honeywell PHD and OSIsoft PI
- Advanced Process Control – Honeywell Profit Controller and ASPEN DMC
- Intergraph Smart Instrumentation (also Known as Intools SmartPlant Instrumentation)

## Quantifiable results

- Up to 40% decrease in incident troubleshooting time.
- Most sites' data captured in 4-6 hours
- 20-50% lower quality assurance project activities.
- Up to 50% increase in process control engineer/technician productivity

## Honeywell Trace™ and Assurance 360

Honeywell Trace™ is part of Honeywell's suite of solutions for smart information capture, data sharing and analysis, and competency development.

Honeywell Assurance 360 is a customer-specific program ranging from "Performa" solutions that build and complement competencies and capabilities within a customer's organization to "Optima" solutions fully executed by Honeywell with guaranteed system performance. In support of Assurance 360, Honeywell Trace™ is included in every Assurance 360 Optima agreement and is available for Performa. It is used to automate documentation of tribal knowledge and actions taken on the control system, reduce issue resolution time and troubleshooting, and detect configuration anomalies and changes.

## Honeywell Trace™ Software Support

Honeywell Trace™ Software Support provides direct technical support from our global systems and software support teams. It includes:

- Standard phone support
- Service packs and feature enhancements
- Remote access for diagnostics

## Trace Package Options

Honeywell Trace™ Packages – Designed to meet your plant needs	<b>Bronze:</b> The Basics you need to <b>Track and Trace</b> your systems' configuration	<b>Silver:</b> Change tracking and <b>insight</b> to improved productivity and Performance	<b>Gold:</b> <b>Manage</b> workflow and real time system performance monitoring
<b>Value:</b>	<ul style="list-style-type: none"> <li>Improve day to day efficiency</li> <li>Reduce costs and overhead</li> <li>Captures and preserves Intellectual property</li> </ul>	<b>Bronze Value Plus:</b> <ul style="list-style-type: none"> <li>Monitor unplanned changes</li> <li>Establish system performance baselines</li> <li>Improved project planning</li> </ul>	<b>Silver Value Plus:</b> <ul style="list-style-type: none"> <li>High plant reliability &amp; Incident recovery</li> <li>Real time system performance monitoring</li> <li>Improving project execution</li> </ul>
Comprehensive Tag Reference Search	X	X	X
Logical View	X	X	X
Hardware View	X	X	X
Network View	X	X	X
User defined queries	X	X	X
On demand and scheduled reports	X	X	X
Change Detection		X	X
Anomaly Identification (Defect Management)		X	X
Channel Spare Management		X	X
On Demand System		X	X
Performance Reporting			X
Workflow and Change Management			X
Live System Performance Monitoring and Alerting			X
Business Network Access	Optional	Optional	Optional

## Trace R140 Specifications

Hardware (minimum required)		
	For 0-200K tags	For 200K – 500K tags
Hard Disk	1 TB	1 TB
RAM	32 GB	64 GB
CPU	16 Core	16 Core
Software		
OS	Microsoft Windows Server 2016 Standard/Datacenter 64 bit	
Web browser	Microsoft Internet Explorer 11 or above	
	Google chrome V80 or later	

### For More Information

Visit our website [www.honeywellprocess.com](http://www.honeywellprocess.com) or contact your Honeywell account manager.

### Honeywell Process Solutions

2101 CityWest Boulevard  
Houston, TX 77042

Honeywell House, Skimped Hill Lane  
Cracknell, Berkshire, England RG12 1EB UK  
Building #1, 555 Huanke Road,  
Zhangjiang Hi-Tech Industrial Park,  
Pudong New Area, Shanghai 201203

Honeywell®, Experion® and Trace™ are registered trademarks of Honeywell International Inc.

Other brand or product names are trademarks of their respective owners.

PIN-20-11-ENG

May 2020

© 2020 Honeywell International Inc.

**Honeywell**