



# Symphonite Production Manager & Downtime Reporter

Release Bulletin

Honeywell's **Symphonite Production Manager 9.0** improves productivity and operational flexibility for plant managers across the MMM enterprise. From mines and production plants, through to port facilities, Production Manager blends improved workflows with new interactive dashboards for faster, smarter, decision making.

This latest release:

- Provides enhanced security
- Improved control over display elements
- Automatic capture of events based on user defined logic
- Supports Microsoft's latest operating systems and database platforms

Production Manager 9.0 continues to demonstrate Honeywell's long term commitment to the Symphonite portfolio for MMM, and it is now available to both new clients, and to our existing installed-base via the Benefits Guardianship Program (BGP).

## Discover What's New

***Interactive visualization, monitoring and analysis dashboards, now with Uniformance Executive integration.***

Allowing supervisors, managers and executives to analyze up-to-date production information, driving faster, more effective, data-driven decisions. It allows Uniformance Executive users to identify and manage opportunities proactively, for cross-asset improvements.

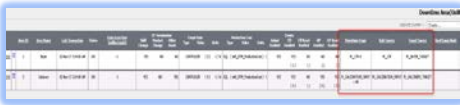


### Secured Connectivity

HTTPS enhanced security protocols ensure that the communications between the client and server is fully encrypted. The HTTPS layer also protects against cyber-attacks aimed at capturing plant and business system information.

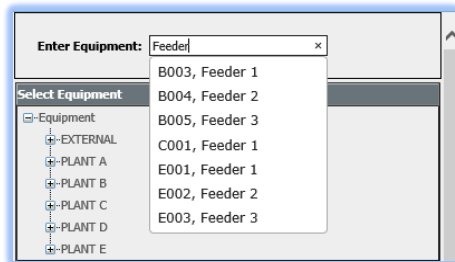
### Automatic Logic Driven Event Capture

Downtime Logic fields now store expression logic for actual downtime determination. Rate Source fields store expression logic for acquiring Actual Rate Values from source tags. In addition, Target Source fields now also store Target Rate logic.

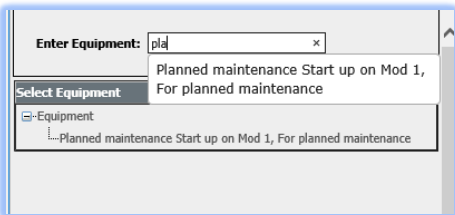


### Faster Identification and Selection of Downtime Equipment

Search: Users can easily search for equipment when entering downtime instead of navigating through the downtime hierarchy.

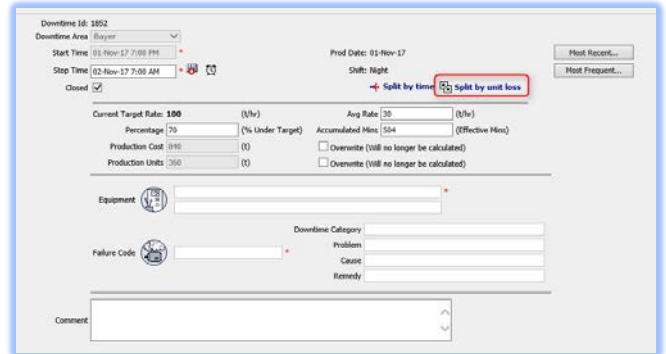


Spot: The ability to narrow down equipment which can now be chosen as root cause for downtime areas.



### Split and Capture Downtime Information for Optimal Business Need Definition

The downtime event can be split by Percentage Loss or Unit Loss. Furthermore, it can be linked to multiple pieces of equipment and associated failure codes.



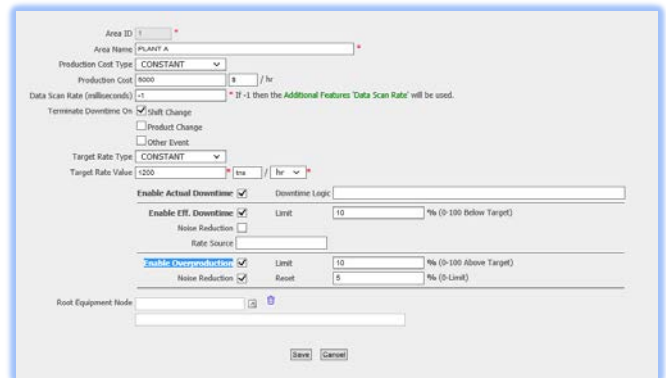
### Capture additional information for downtime

Users can now configure additional fields for equipment downtime, as well as saving numerical and text information.



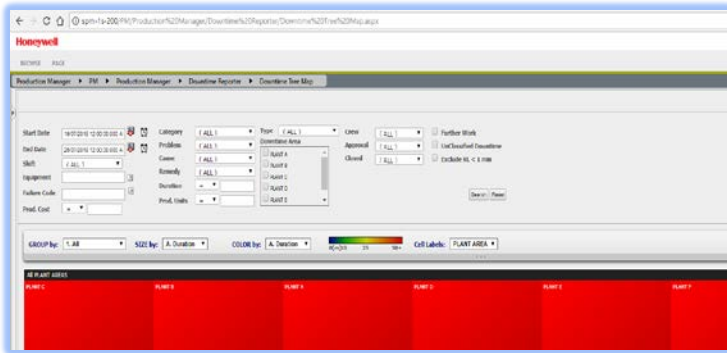
### Recording of Atypical Events

Release 9.0 now enables the recording of Over Production events for when production exceeds upper operating thresholds.



## Chrome Browser Enabled TreeMapping Controls

TreeMapping controls are now supported in Chrome browsers, reducing single browser dependencies.



## Latest Platform Support

Release 9.0 supports SharePoint 2016, Windows Server 2016 and Windows 10.

\*Integration into Uniformance Executive will require a license.

## Contact Information

Product Manager

[Gokul.SunkaraMahendraBabu@Honeywell.com](mailto:Gokul.SunkaraMahendraBabu@Honeywell.com)

Learn more about Honeywell's Symphonite Supply Chain and Production Management solutions at [www.hwil.co/symphonite](http://www.hwil.co/symphonite) or contact your Honeywell Account Manager.

## Honeywell Process Solutions

1250 West Sam Houston Parkway  
South Houston, TX 77042.

Honeywell House, Arlington Business  
Park, Bracknell, Berkshire, England  
RG12 1EB, UK.

Shanghai City Centre, 100 Zunyi Road  
Shanghai, China 200051.

[www.honeywellprocess.com](http://www.honeywellprocess.com)

January 2019  
© 2019 Honeywell  
International Inc.

**Honeywell**