

Installation Guide Engauge 2.5

Part nr.: 4417.482
Rev 2
March 2012

Honeywell Enraf
P.O. Box 812
2600 AV Delft
Netherlands

Tel: +31 15 2701 100
Fax: +31 15 2701 111
E-mail: info@enraf.nl
[http:// www.honeywellenraf.com](http://www.honeywellenraf.com)

Copyright 2012 Enraf B.V. All rights reserved.

Reproduction in any form without the prior consent of Enraf B.V. is not allowed. This manual is for information only. The contents, descriptions, and specifications are subject to change without notice. Enraf BV accepts no responsibility for any errors that may appear in this manual.

The warranty terms and conditions applicable in the country of purchase in respect to Enraf B.V. products are available from your supplier. Please retain them with your proof of purchase.

Preface

This document describes the installation of the Honeywell Enraf's commission tool Engauge 2.5

Safety and prevention of damage

Always adhere to the instructions in this manual.

In case of doubt or problems, always consult your Honeywell Enraf representative.

Refer to the front cover for contact information.

Additional information

Please do not hesitate to contact Honeywell Enraf or its representative if you require additional information.

Legal aspects

The information in this manual is copyright property of Enraf BV, Netherlands.

Enraf BV disclaims any responsibility for personal injury or damage to equipment caused by:

- Deviation from any of the prescribed procedures or
- Execution of activities that are not clearly documented.

Table of contents

Preface.....3

Table of contents4

1. Introduction5

2. System Requirements5

3. Installation5

4. License7

5. Engauge.....8

6. Uninstall.....8

7. Related Documents8

1. Introduction

This guide describes how to install the Engauge 2.5 commissioning tool. Engauge is a software tool used by (Service) Engineers to commission and configure Honeywell-Enraf field equipment like Servo and Radar Gauges. From version 2.2 and higher Engauge supports both GPU and FlexConn equipment.

2. System Requirements

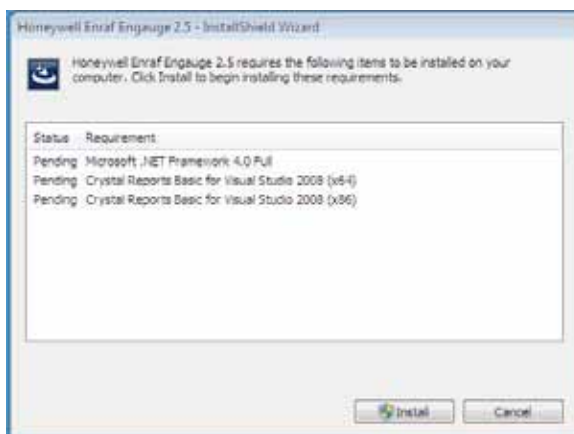
Check PC hardware and software. The system requirements are:

- 32 bit Microsoft Windows 7 Professional SP1
- Pentium IV 1.5 GHz or faster processor
- Minimum 1 GB memory
- Direct X9 compatible graphics adapter.
- 250 MB free space hard disk
- CD-ROM drive
- One or more free Serial (RS232) Comm.port(s)
- For commissioning a 990 OneWireless Radar a LAN connection is required.

3. Installation

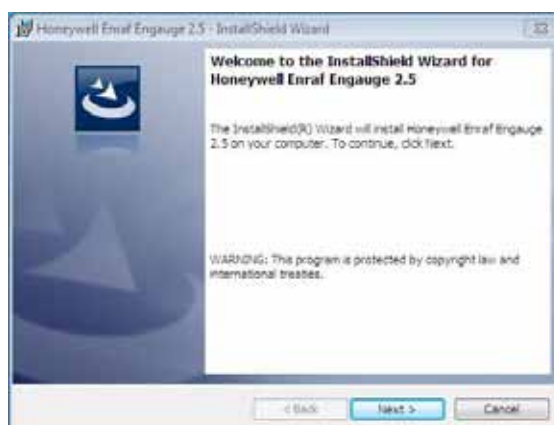
Close all other applications and Insert the CD in the CD-ROM drive. If AutoPlay is enabled Setup will start automatic, if not open “Computer” on the Start Menu, Browse to the Engauge CD-ROM and start **Setup.exe**

If Microsoft .Net Framework 4.0 and Crystal Reports are not already on the system, the InstallShield Wizard will install them.



Click on “Install”

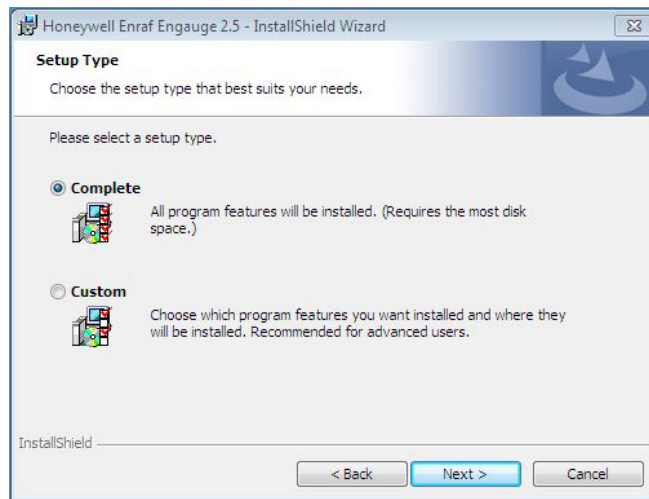
If a User Account Control window pops up click “Yes” to allow the program to make changes on the computer. After all required items are installed the Engauge 2.5. Installation window pops up



Click on “Next”



Select “I accept the terms in the license agreement” and click “Next” to proceed with the installation of Engauge. If you don’t accept the terms in the displayed license agreement, click “Cancel” to terminate the installation of Engauge.



On Select Type window select “Complete” for a full Engauge installation and click “Next”



On the next window click “Install” to start the installation. If a User Account Control window pops up click “Yes” to allow the program to make changes on the computer.

After the Installation is completed click on “Finish”

Now the following programs should be available in the Windows Start Menu/All Programs:

Honeywell Enraf

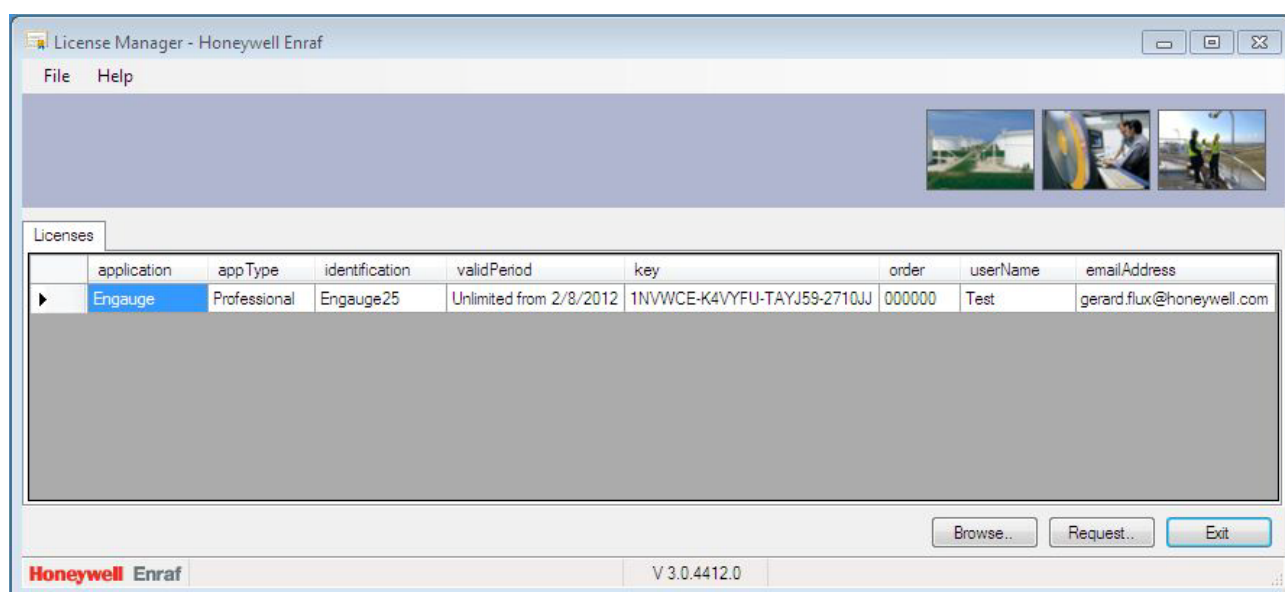
- Ø Configuration
 - Engauge 2.5
 - Engauge 2.5 Help
- Ø License Manager
 - License Manager

4. License

To use the software a valid license file is required, which you should have received by email. Save this file on your system.

Start the License Manager by /Start/All Programs/Honeywell Enraf/License Manager/License Manager

If you don't have a valid license file use the "Request" button to obtain your license from Honeywell Enraf.



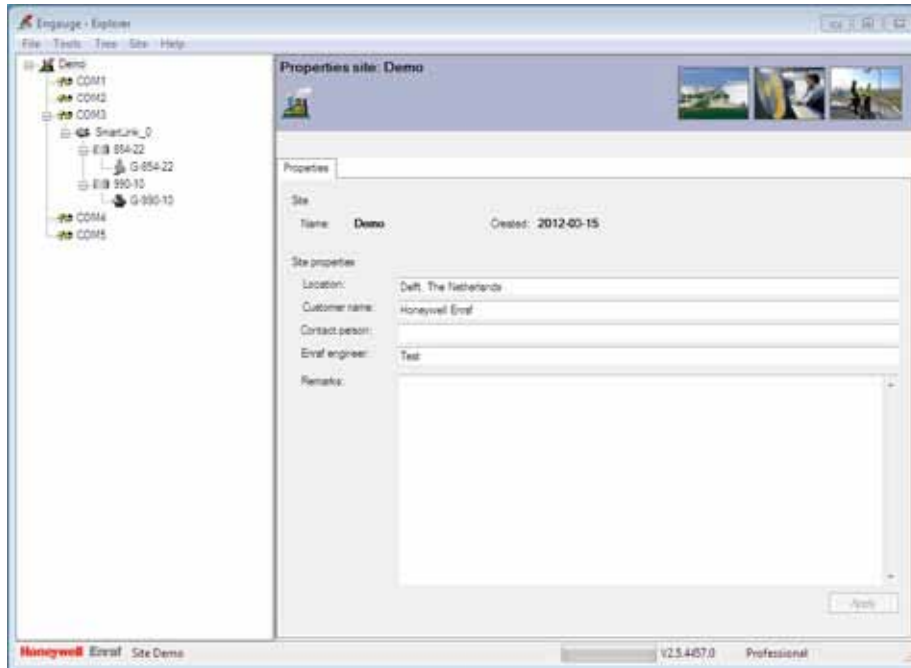
Use the "Browse" button to browse to the license file (xxxxxx-xxxxxx-xxxxxx-xxxxxx.XML) and click "Open" If you already have an Engauge license on your system, the License Manager will ask if it should be replaced with the new license.

After the license is installed click "Exit"

The license determines if you can use Engauge as a Basic, Professional or Enterprise user. You can have only one Engauge license on your system at the same time.

5. Engauge

After installation you can start Engauge by /Start/All Programs/Enraf/Engauge, if a valid license is found Engauge will startup. Now you can create a new site (File/New) and perform a Site Scan (Tools/Site Scan)

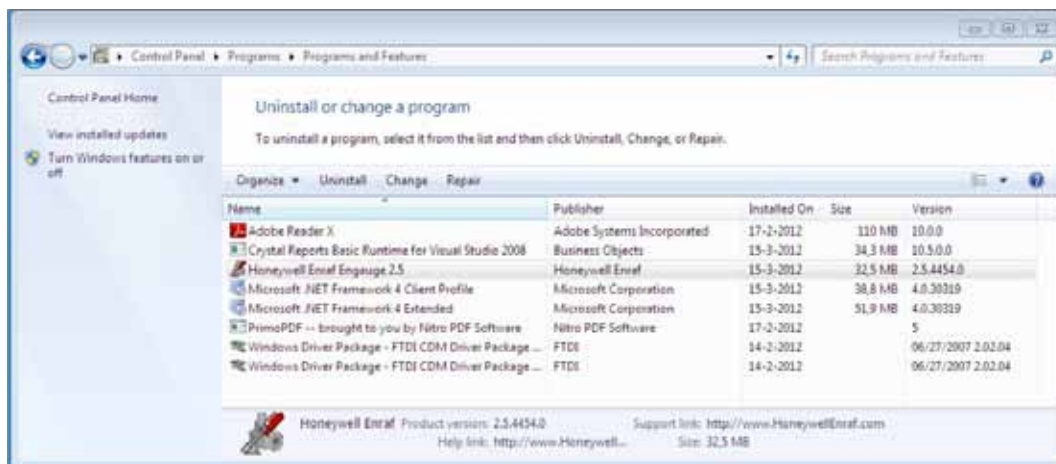


6. Uninstall

To uninstall Engauge from your system use Start/Control Panel/Programs/Uninstall a program. Select "Honeywell Enraf Engauge 2.5" and Click "Uninstall"

License Manager will also be uninstalled.

If a User Account Control window pops up click "Yes" to allow the program to make changes on the computer.



7. Related Documents

- BA086-1899006-4x Engauge Release Notes
- BA582-1899006-4x W&M Sealing Guide
- Engauge Quick Start Guide