

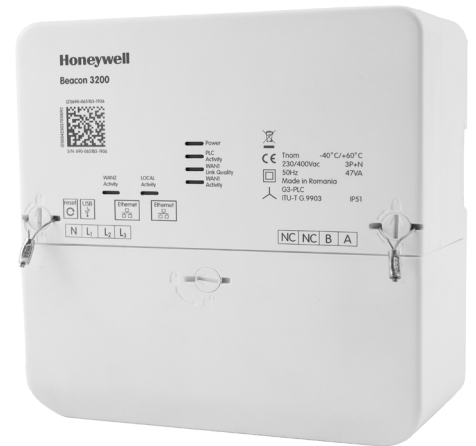
# BEACON 3200

## Data Concentrator

True end-to-end secure G3-PLC data concentrator, Hybrid concentrator, gateway or router meter reading.

The Beacon 3200 is the newest data concentrator for smart grid applications offered by Honeywell. The Beacon 3200 can operate in three modes:

1. *Data concentrator mode* - buffering events and data between utility meters and the HES;
2. *DLMS Gateway mode* - direct communication between HES and meters;
3. *IPv6 router mode* – Beacon's IP capability allows reaching the meters in the network;



Beacon 3200 front view

## END-TO-END SECURITY

The Beacon 3200 was developed with high level security options, including a hardware security module and encryption standards in accordance with the latest EAL6+ assurance level.

All confidential data (customer information, certificates, runtime configurations and event logs) is encrypted.

Both downstream and upstream communication are secured and even the most demanding DLMS security suites are supported. Its powerful processing platform allows for future updates, protecting your investment.

The Beacon 3200 provides true end-to-end security in a simple and easy-to-use way.

## FEATURES AND BENEFITS

- True end-to-end security.
- Interoperable, standard interfaces for upstream and downstream communication.
- G3-PLC communication (FCC and CENELEC-A).
- Simple management, perfect fit for large scale rollouts.
- Open Head-end system interface.
- Open meter interface.
- Upstream interoperability: DLMS/COSEM over TCP.
- Downstream interoperability: DLMS/COSEM over G3-PLC.
- Support for IPsec VPN Tunneling.
- Hardware platform designed for evolution towards future needs and extensions.
- Simultaneous concentrator, gateway and router functionality.
- Last gasp protection against power drop.
- DLMS security suite 0, 1 and 2.
- Integrated web server for local configuration and maintenance.
- G3-PLC Alliance standard certified.
- Tamper detection.
- Ingress protection level: IP51.
- Auto configuration (plug and play feature).
- Upstream communication through modem or LAN connection.
- Multi-layer security (PLC-MAC and DLMS application layer).
- EAL6+ certified hardware security.
- Hot-swappable modem and SIM card.

# BEACON 3200 TECHNICAL SPECIFICATIONS

<b>ELECTRICAL CHARACTERISTICS</b>	<ul style="list-style-type: none"> <li>Nominal voltage Un: 3x230/400 V AC (3P+N);</li> <li>Frequency: 50 Hz (<math>\pm 5\%</math>);</li> <li>Power consumption: 47 VA (3xPLC signal amplifiers, one for each phase);</li> <li>Power monitoring function: voltage measurement maximum 480 V AC (<math>\pm 1\%</math>);</li> </ul>
-----------------------------------	--

<b>MECHANICAL CHARACTERISTICS</b>	<ul style="list-style-type: none"> <li>Overall dimensions: 183 x 174 x 78,5 mm (including terminal cover);</li> <li>Weight: 0,9 kg;</li> <li>Protection class: IP51 (in accordance with IEC 60529);</li> <li>Material: polycarbonate, UV stabilized, UL94-5VA flame retardant;</li> <li>Mounting: standard DIN rail or 3-point mounting screws;</li> </ul>
-----------------------------------	--

<b>TEMPERATURE RANGE</b>	<ul style="list-style-type: none"> <li>Operating temperature range: <math>-40^{\circ}\text{C} \dots +60^{\circ}\text{C}</math>;</li> <li>Storage and transport temperature range: <math>-40^{\circ}\text{C} \dots +80^{\circ}\text{C}</math>;</li> </ul>
--------------------------	--

<b>MEMORY</b>	<ul style="list-style-type: none"> <li>512 MB DDR3 RAM;</li> <li>2GB NAND Flash;</li> </ul>
---------------	---

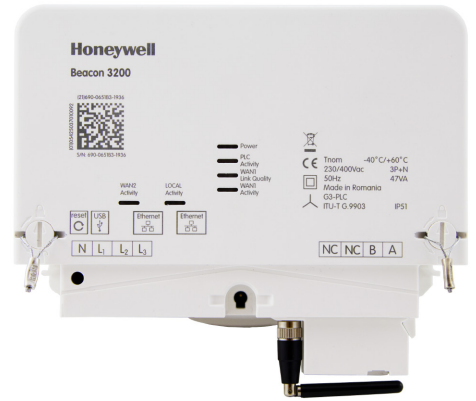
<b>OPERATING SYSTEM</b>	<ul style="list-style-type: none"> <li>Custom hardened Linux<sup>®</sup>;</li> </ul>
-------------------------	--

<b>SOFTWARE UPGRADE</b>	<ul style="list-style-type: none"> <li>Over Ethernet (local or WAN);</li> <li>Over 2G/3G/4G modem;</li> </ul>
-------------------------	---

<b>TAMPER DETECTION</b>	<ul style="list-style-type: none"> <li>Removal detection of the terminal cover;</li> </ul>
-------------------------	--

<b>INTERFACES</b>	<ul style="list-style-type: none"> <li>USB 2.0 interface (reserved for future functionalities);</li> <li>10/100 Mbps Ethernet WAN port;</li> <li>10/100 Mbps Local Ethernet port;</li> <li>Extension slot for an optional 2G/3G/4G modem;</li> <li>Power line connector for 3P+N;</li> <li>RS-485 isolated port (reserved for future functionalities);</li> </ul>
-------------------	---

<b>CERTIFICATION</b>	<p><b>CE</b></p> <ul style="list-style-type: none"> <li>EN 55032;</li> <li>EN 61000-4-2;</li> <li>EN 61000-4-5;</li> <li>EN 61000-4-9;</li> <li>EN 61000-4-16;</li> <li>RED compliant (EU directive 2014/53/EU);</li> </ul> <p><b>PLC</b></p> <ul style="list-style-type: none"> <li>EN 50065-1;</li> <li>G3-PLC Alliance compliant CENELEC-A and FCC;</li> </ul> <p><b>SAFETY</b></p> <ul style="list-style-type: none"> <li>IEC 60950-1;</li> </ul> <p><b>SHOCK</b></p> <ul style="list-style-type: none"> <li>IEC 60068-2-27;</li> </ul> <p><b>VIBRATION</b></p> <ul style="list-style-type: none"> <li>IEC 60068-2-6;</li> </ul>
----------------------	--



Beacon 3200 with 2G/3G/4G modem and 3G antenna (under the terminal cover).

\*for 4G communication, an external mounting antenna must be purchased separately.

For more information  
[www.honeywellsmartgrid.com](http://www.honeywellsmartgrid.com)

**S.C. ELSTER Rometrics S.R.L.**  
 Timisoara Airport Park  
 DJ 691, km8+775m, 307210  
 Giarmata, Timis county, Romania  
[www.honeywell.com](http://www.honeywell.com)

All rights reserved. The company's policy is one of continuous product improvement and the right is reserved to modify the specifications contained herein without notice. These products have been manufactured with current technology and in accordance with the applicable referenced standards.

PRen-GB000066\_03 Beacon 3200 datasheet  
 © 2020 Honeywell International Inc.

**THE  
 FUTURE  
 IS  
 WHAT  
 WE  
 MAKE IT**

**Honeywell**